

# THE SMARTVFD HVAC2

Loaded with Smart Features to Reduce Energy Use



---

Variable Frequency Drives

---

**Honeywell**

# SMARTVFD HVAC2 SPINS BIG ENERGY SAVINGS

When Honeywell's full-featured SmartVFD HVAC is more than your customers need, turn to the new SmartVFD HVAC2. It offers a range of essential features to give you a cost-efficient way to deliver the energy savings that building managers desire.

*In short, the SmartVFD HVAC2 is a smart value.*

## APPLICATION FRIENDLY

With the SmartVFD HVAC2, you aren't limited to a few applications. Its small footprint gives you the flexibility to meet a range of mounting situations. Plus, the motor pre-heat function helps ensure performance in cold climates, giving you more sales opportunities.

- Sizes available up to 7.5Hp, helping you meet a wide range of applications
- Same size as SmartVFD Compact for models up to 7.5hp, allowing maximum application flexibility
- Models available with and without a Class 2 EMC Filter, so you can handle applications with electrical interference



# GREAT FEATURES AT A GREAT VALUE



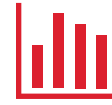
## EASY INSTALLATION AND SETUP

Not only does the small footprint give you mounting flexibility, but it's also a real "knuckle saver" when working in tight spaces. Configuration is easy, too. The unit uses the same keypad interface as the SmartVFD HVAC, with intuitive navigation and simple commissioning. Setup is as easy for you as saving energy will be for your customers.



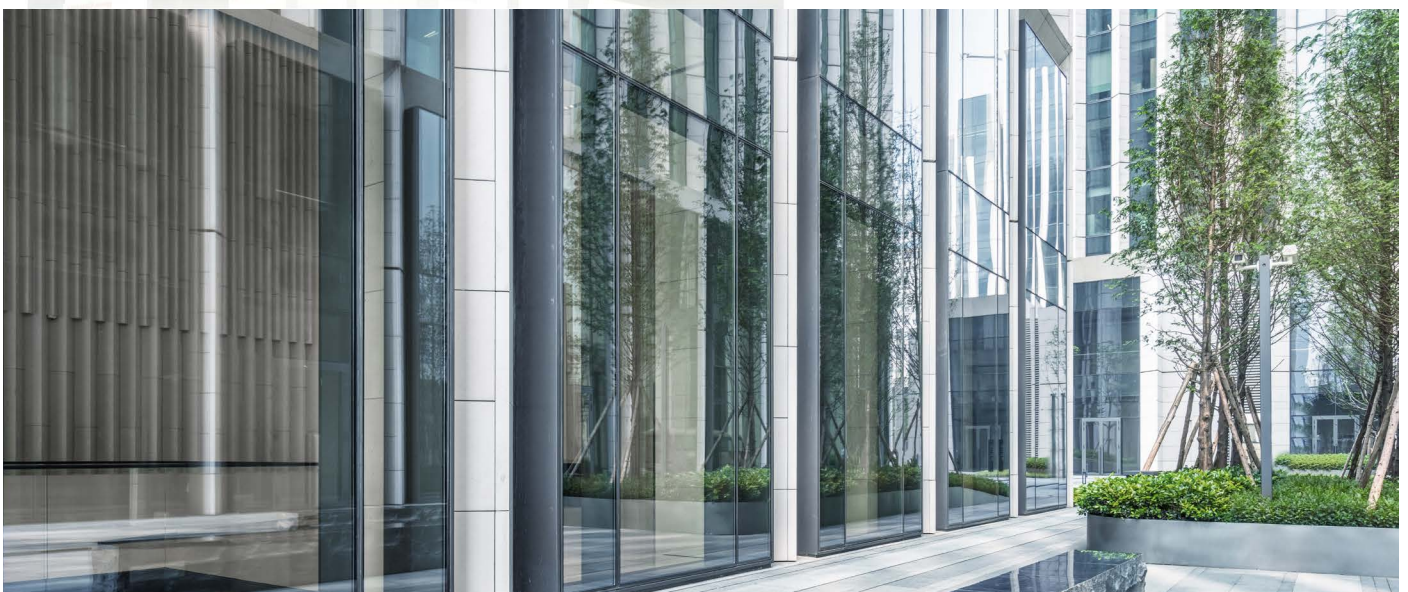
## IDEAL FOR RETROFIT APPLICATIONS

With the SmartVFD HVAC2, you don't have to wait for new construction to help customers save energy. The application flexibility, ease of use, and simple installation make it an excellent choice for most retrofit projects. And the lower price shortens the payback period — a great selling point for customers seeking value.



## GROW YOUR BUSINESS

With SmartVFD HVAC2 added to SmartVFD HVAC and SmartVFD Compact, you can meet the needs of every customer, application, and budget. Plus, the SmartVFD HVAC2 helps reduce service calls with an Automatic Restart feature that restarts the unit if it goes into a fault condition. Add in Honeywell's world-renowned quality, and you can count on the SmartVFD HVAC2 to serve your business — and your customers — for years to come.



SMARTVFD HVAC2 MODELS				
NOMINAL VOLTAGE	NOM. HP (NOM. CURRENT)	EMC FILTER	FRAME SIZE	PART NUMBER
105-120V 1-phase in 230V 3-phase out	0.50 HP (2.4 A)	EMC4	MI2	HVFD2D1A0005
	1 HP (3.7 A)		MI2	HVFD2D1A0010
	1.5 HP (4.8 A)		MI3	HVFD2D1A0015
208-240V 1-phase in 3-phase out	0.50 HP (2.4 A)	EMC2	MI1	HVFD2D1B0005E2
	1 HP (3.7 A)		MI2	HVFD2D1B0010E2
	1.5 HP (4.8 A)		MI2	HVFD2D1B0015E2
	3 HP (9.6A)		MI3	HVFD2D1B0030E2
208-240V 3-phase in 3-phase out	0.50 HP (2.4 A)	EMC4	MI1	HVFD2D3B0005
	0.75 HP (2.8 A)		MI1	HVFD2D3B0007
	1 HP (3.7 A)		MI2	HVFD2D3B0010
	1.5 HP (4.8 A)		MI2	HVFD2D3B0015
	2 HP (7 A)		MI2	HVFD2D3B0020
	3 HP (11 A)		MI3	HVFD2D3B0030
380-480V 3-phase in 3-phase out	0.50 HP (1.3 A)	EMC4	MI1	HVFD2D3C0005
	1 HP (2.4A)		MI1	HVFD2D3C0010
	1.5 HP (3.3 A)		MI2	HVFD2D3C0015
	2 HP (4.3 A)		MI2	HVFD2D3C0020
	3 HP (5.6 A)		MI2	HVFD2D3C0030
	4 HP (7.6 A)		MI3	HVFD2D3C0040
	5 HP (9 A)		MI3	HVFD2D3C0050
	7.5 HP (12 A)		MI3	HVFD2D3C0075
380-480V 3-phase in 3-phase out	0.50 HP (1.3 A)	EMC2	MI1	HVFD2D3C0005E2
	1 HP (2.4A)		MI1	HVFD2D3C0010E2
	1.5 HP (3.3 A)		MI1	HVFD2D3C0015E2
	2 HP (4.3 A)		MI2	HVFD2D3C0020E2
	3 HP (5.6 A)		MI2	HVFD2D3C0030E2
	4 HP (7.6 A)		MI2	HVFD2D3C0040E2
			MI3	HVFD2D3C0040E2
520-600V 3-phase in 3-phase out	1 HP (1.7A)	EMC4	MI3	HVFD2D3F0010
	3 HP (3.9A)		MI3	HVFD2D3F0030
	5 HP (6.1A)		MI3	HVFD2D3F0050

SMARTVFD HVAC2 ACCESSORIES	
ACCESSORIES	DESCRIPTION
HVFD2DOPTFR123	Option board mounting kit HVAC2 MI1-MI3
HVFDSDOPT6DI/U	Option board 6 x DI/DO, each I/O can be individually configured
HVFDSDOPT2RO1T/U	Option board 2 x Relay output + Thermistor
HVFDSDOPT1AI2AO/U	Option board 1 x AI, 2 x AO (isolated)
HVFDSDOPT3RO/U	Option board 3 x Relay output
HVFDSDOPT1RO5DI/U	Option board 1 x RO, 5 x DI (42-240 VAC)
HVFDOPPTMP	Option board Temperature measurement (PT100, PT1000, NI1000, KTY84-130, KTY84-150, KTY84-131)
50021579-001/U	PT1000 Sensor probe (or T775-SENS-WR water resistant or T775-SENS-WT water tight)
HVFDNEMA1FR1	Nema 1 Kit MI1
HVFDNEMA1FR2	Nema 1 Kit MI2
HVFDNEMA1FR3	Nema 1 Kit MI3
HVFD2DMOUNTKIT	SmartVFD HVAC2 Door Mounting Kit
HVFDCABLE/U	SmartVFD Commissioning Cable and USB Adaptor
HVFDCA/MCA/U	Compact Commissioning Device
HVFDCA/MCAKIT/U	Compact Commissioning Kit (Cable, USB Adaptor, and Device combined)

**For more information**

[www.buildingcontrols.honeywell.com](http://www.buildingcontrols.honeywell.com)  
[www.honeywell.com](http://www.honeywell.com)

**Honeywell Building Technologies**

715 Peachtree St NE  
 Atlanta,  
 Georgia 30308  
[www.honeywell.com](http://www.honeywell.com)

**THE  
 FUTURE  
 IS  
 WHAT  
 WE  
 MAKE IT**

